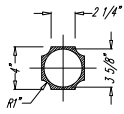


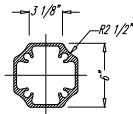
This drawing is property of Spring City Elect. Mfg. and is issued to the recipient with the understanding that it shall not be copied, duplicated, passed on to unauthorized parties, nor used for any purpose other than that for which it is specifically furnished except with Spring City's written permission.



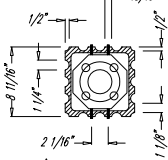
DETAIL A
DETAIL OF OPTIONAL PHOTO CONTROL PHOTO CELL TO REPLACE CROSS ARM FINAL WHEN REQUIRED. ALL PHOTO CELL ARMS TO BE MARKED "TYPE P" N.T.S.



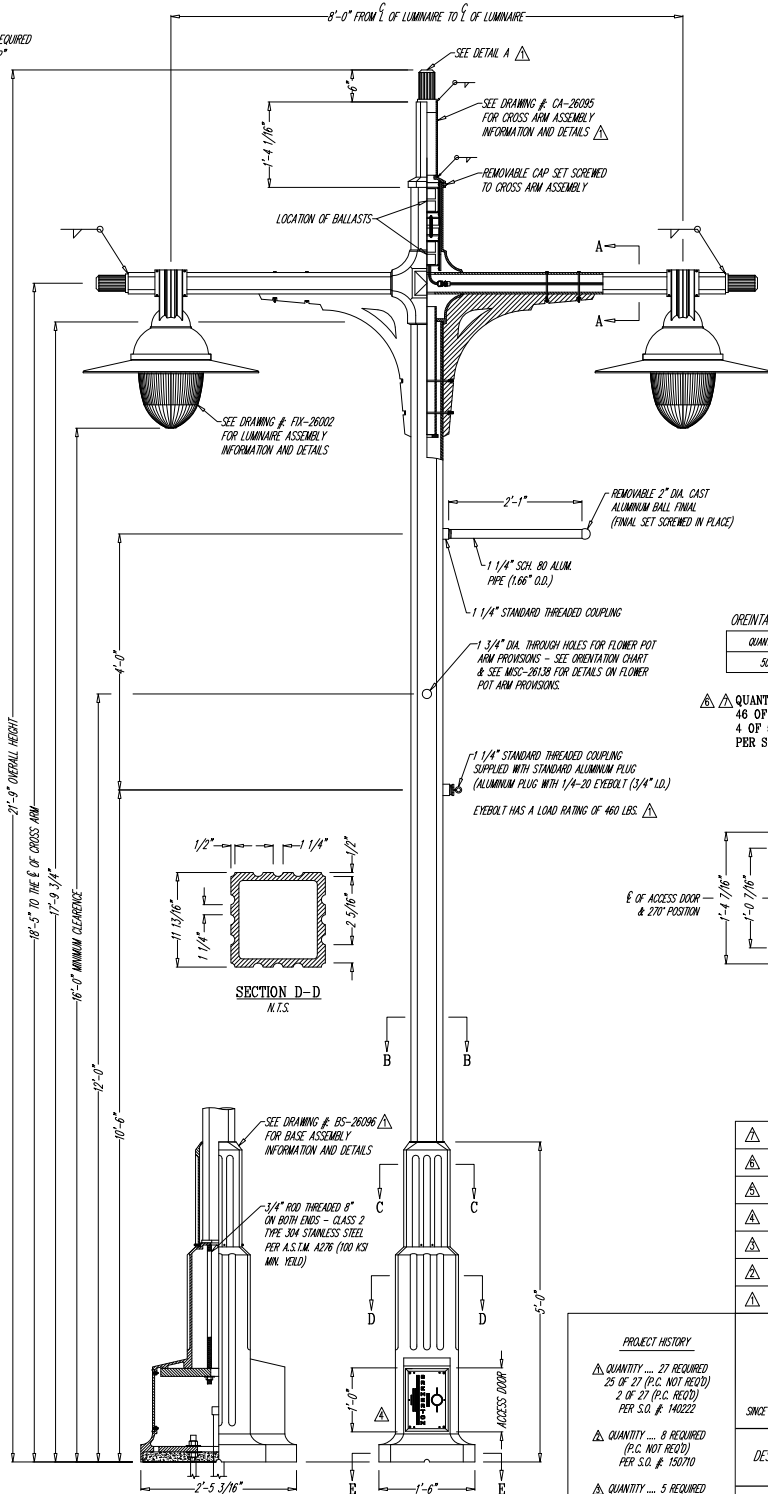
SECTION A-A
N.T.S.



SECTION B-B
N.T.S.



SECTION C-C
SEE DRAWING # BS-26096 FOR BASE CAP ASSEMBLY INFORMATION AND DETAILS N.T.S.



LUMINAIRE SPECIFICATIONS

STYLE: HUDSON RIVER PARK PEDESTRIAN
 HEIGHT: 29 3/4"
 WIDTH: 13" DIA.
 MATERIAL: CAST AND SPUN ALUMINUM
 GLOBE: REFRACTIVE POLYCARBONATE
 FINISH: PRIME PAINT THEN FINISH PAINT, SHERWIN WILLIAMS ACRYLON - LONG BEACH BLUE
 LAMPING: 100 WATT HIGH PRESSURE SODIUM (LAMP BY OTHERS)
 VOLTAGE: 120 VOLT
 SOCKET: MEDIUM BASE
 DISTRIBUTION: TYPE III (ASYMMETRIC DISTRIBUTION)
 PHOTO CONTROL: OPTIONAL TWIST LOCK PHOTO CELL

CROSS ARM SPECIFICATIONS

STYLE: HUDSON RIVER PARK ROADWAY TWIN
 HEIGHT: 47 3/4"
 WIDTH: 8'-0" FROM CENTER OF LUMINAIRE TO CENTER OF LUMINAIRE
 MATERIAL: CAST ALUMINUM
 FINISH: PRIME PAINT THEN FINISH PAINT, SHERWIN WILLIAMS ACRYLON - LONG BEACH BLUE

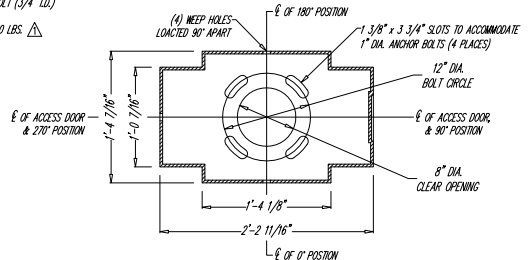
LAMP POST SPECIFICATIONS

STYLE: HUDSON RIVER PARK
 HEIGHT: 17'-9 3/4"
 BASE: 18" x 29 3/16"
 MATERIAL: EXTRUDED 6063-T6 ALUMINUM SHAFT
 SHAFT: 1 PIECE, HEAVY WALL CAST DUCTILE IRON PER A.S.T.M. A 536-84 GRADE 65-45-12
 BASE: PRIME PAINT THEN FINISH PAINT, SHERWIN WILLIAMS ACRYLON - LONG BEACH BLUE
 FINISH: (2) LOCATED IN BASE SECURED WITH CAPTIVE TAMPER PROOF HEX SOCKET SECURITY MACHINE SCREWS
 ACCESS DOORS: UPRILL AND TOP INSIDE WALL OF BASE TO ACCOMMODATE 4 1/4"-20 GROUND STUD (GROUND STUD BY SPRING CITY)
 GROUND STUD PROVISIONS: 1" DIA. ANCHOR BOLTS (BY OTHERS)
 ANCHOR BOLTS: 5" REQUIRED
 BOLT PROJECTION: 5" REQUIRED
 PLEASE NOTE:
 1. ALL HARDWARE SHALL BE STAINLESS STEEL
 2. ALL VISIBLE HARDWARE SHALL BE FINISH PAINTED TO MATCH POST COLOR

ORIENTATION SPECIFICATIONS

QUANTITY	BANNER ARM & EYEBOLT POSITION	CROSS ARM POSITION	FLOWER POT ARM POSITION
50	0°	0° / 180°	90° / 270°

QUANTITY 50 COMPLETE UNITS REQUIRED
 46 OF 50 REQUIRED WITH STANDARD FINAL
 4 OF 50 REQUIRED WITH OPTIONAL PHOTO CONTROL
 PER S.O. #: 170281



SECTION E-E
N.T.S.

REVISOR: B.K.R.	DATE: 08-09-07
REVISOR: B.K.R.	DATE: 06-18-07
REVISOR: B.K.R.	DATE: 09-06-06
REVISOR: B.K.R.	DATE: 07-06-06
REVISOR: B.K.R.	DATE: 05-12-06
REVISOR: B.K.R.	DATE: 02-28-06
REVISOR: B.K.R.	DATE: 05-03-04

PROJECT HISTORY
 QUANTITY ... 27 REQUIRED
 25 OF 27 (P.C. NOT REQ'D)
 2 OF 27 (P.C. REQ'D)
 PER S.O. #: 140222
 QUANTITY ... 8 REQUIRED
 (P.C. NOT REQ'D)
 PER S.O. #: 150710
 QUANTITY ... 5 REQUIRED
 (P.C. NOT REQ'D)
 PER S.O. #: 180227
 QUANTITY ... 2 REQUIRED
 (P.C. NOT REQ'D)
 PER S.O. #: 160488

Spring City Electrical Mfg. Co.
 SINCE 1843 HALL AND MAIN STREETS - P.O. DRAWER 19 - SPRING CITY, PA. 19475 - PHONE (610) 948-4000 - FAX (610) 948-5577

DESCRIPTION	THE BRM HUDSON RIVER PARK LAMP POST		
CUSTOMER	CITY OF BREMERTON, WA		
JOB	BREMEROTON PED/BTC ACCESS		
SCALE	DRAWN BY:	DATE	DRAWING NO.
N.T.S.	B.K.R.	01-10-04	LP-26097



City of Bremerton
PUBLIC WORKS
ENGINEERING DIVISION

**CENTRAL BUSINESS DISTRICT
 DOUBLE FIXTURE LIGHT STANDARD**

7022

Revision Date
 2/4/08

Alteration of this drawing is prohibited. Any approval of an altered drawing is unauthorized and void.