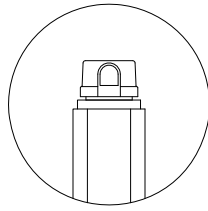


This drawing is property of Spring City Elect. Mfg. and is issued to the recipient with the understanding that it shall not be copied, duplicated, passed on to unauthorized parties, nor used for any purpose other than that for which it is specifically furnished except with Spring City's written permission.



**△ DETAIL A**  
 DETAIL OF OPTIONAL PHOTO CONTROL  
 PHOTO CELL TO REPLACE CROSS ARM FINIAL WHEN REQUIRED  
 ALL PHOTO CELL ARMS TO BE MARKED "TYPE P"  
 N.T.S.

**LUMINAIRE SPECIFICATIONS**

STYLE: BREMERTON  
 HEIGHT: 29 3/4"  
 WIDTH: 33" DIA.  
 MATERIAL: CAST AND SPUN ALUMINUM  
 GLOBE: REFRACTIVE POLYCARBONATE  
 FINISH: PRIME PAINT THEN FINISH PAINT, SHERWIN WILLIAMS ACROLON - LONG BEACH BLUE  
 LAMPING: 100 WATT HIGH PRESSURE SODIUM (LAMP BY OTHERS)  
 VOLTAGE: QUAD WIRED AT 120  
 SOCKET: MEDIUM BASE  
 DISTRIBUTION: TYPE III (ASYMMETRIC DISTRIBUTION)  
 PHOTO CONTROL: OPTIONAL TWIST LOCK PHOTO CELL

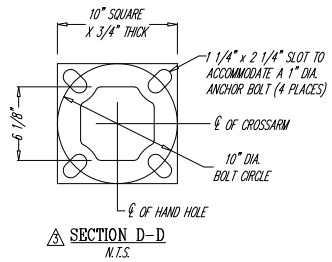
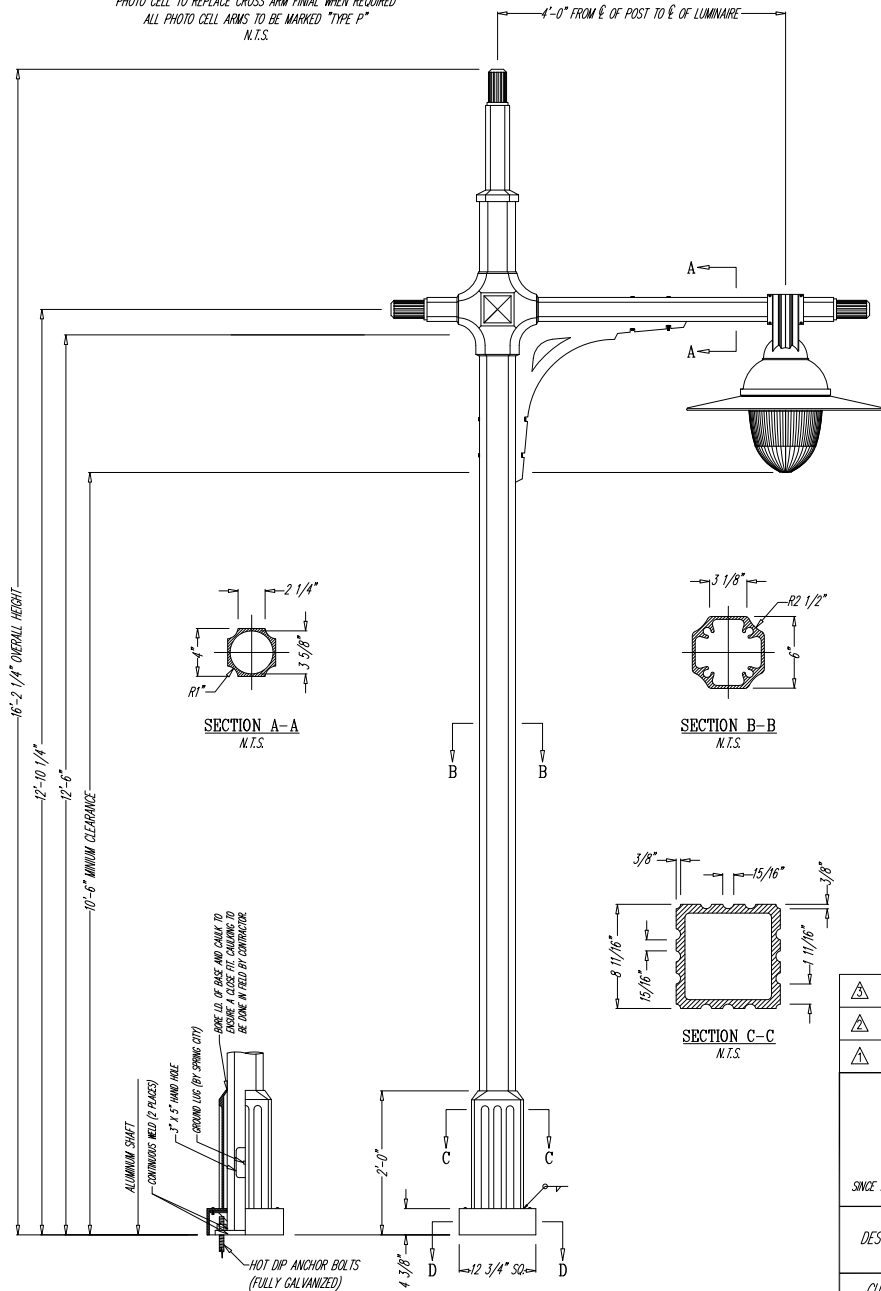
**CROSS ARM SPECIFICATIONS**

STYLE: HUDSON RIVER PARK ROADWAY SINGLE  
 HEIGHT: 47 3/4"  
 WIDTH: 8'-0" FROM E OF LUMINAIRE TO E OF LUMINAIRE  
 MATERIAL: CAST ALUMINUM  
 FINISH: PRIME PAINT THEN FINISH PAINT, SHERWIN WILLIAMS ACROLON - LONG BEACH BLUE

**LAMP POST SPECIFICATIONS**

STYLE: BREMERTON ALUMINUM  
 HEIGHT: 12'-6"  
 BASE: 12 3/4" SQUARE  
 MATERIAL: EXTRUDED 6063-T6 ALUMINUM SHAFT  
 BASE: 1 PIECE (SLIP OVER), HEAVY WALL CAST ALUMINUM ALLOY A.N.S.I. 356, PER A.S.T.M. B26-95  
 FINISH: PRIME PAINT THEN FINISH PAINT, SHERWIN WILLIAMS ACROLON - LONG BEACH BLUE  
 ACCESS DOOR: NOT REQUIRED  
 GROUND STUD PROVISIONS: DRILL AND TAP INSIDE WALL OF BASE TO ACCOMMODATE A 1/4"-20 GROUND STUD (GROUND STUD BY SPRING CITY)  
 ANCHOR BOLTS: 1" DIA. ANCHOR BOLTS (BY OTHERS)  
 BOLT PROJECTION: 3" REQUIRED  
 PLEASE NOTE:  
 1. ALL HARDWARE SHALL BE STAINLESS STEEL  
 2. ALL VISIBLE HARDWARE SHALL BE FINISH PAINTED TO MATCH POST COLOR


**△ QUANTITY** ..... 13 REQUIRED  
 STANDARD FINIAL (PHOTO CONTROL NOT REQUIRED)  
 PER S.O. #: 150710



△ REVISED BY: B.K.R.	DATE: 05-09-06
△ REVISED BY: B.K.R.	DATE: 02-28-06
△ REVISED BY: B.K.R.	DATE: 03-31-04

 **Spring City Electrical Mfg. Co.**  
 PHONE (610) 948-4000  
 SINCE 1843 HALL AND MAIN STREETS - P.O. DRAWER 19 - SPRING CITY, PA. 19475 - FAX (610) 948-5577

DESCRIPTION	THE BREMERTON ALUMINUM POST WITH THE BREMERTON SLIP BASE		
CUSTOMER			
JOB			
SCALE	DRAWN BY:	DATE	DRAWING NO.
N.T.S.	B.K.R.	03-09-04	LP-26116

 **City of Bremerton**  
 PUBLIC WORKS  
 ENGINEERING DIVISION

**CENTRAL BUSINESS DISTRICT  
 SINGLE FIXTURE LIGHT STANDARD**

**7023**  
 Revision Date  
 2/4/08

Alteration of this drawing is prohibited. Any approval of an altered drawing is unauthorized and void.